

line Of Beautiful Secret Rose™

Create beautiful line with nature and stability
of patented technology



V line face



Facial fat removal



Skin elasticity improvement



Skin texture improvement



Skin brightness improvement

How to use

Injection amount: min 0.2ml ~ max 0.5ml per spot

Evenly inject 0.3ml at 1cm intervals on face

For each face treatment, it is performed once per week, up to 4 times.

For body treatment, inject 0.3ml to 0.5ml evenly at 1.5cm ~ 2cm intervals

For each body treatment, it is performed once every 7 to 14 days, up to 8 times.

For face treatment, inject into dermal layer. For body treatment, inject directly into the fatty layer or cellulite area.

After treatment, massage the area for approximately 3 to 5 minutes to improve the effect (Patients can also massage by themselves)



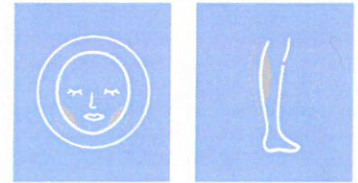


Difference in technology

Other company's products can cause some side effects like severe body aches, headache, chills, heart palpitations, cold sweat, cold symptoms, hand shaking, frozen cramp. In some ways, these side effects are a natural and common phenomenon of fat decomposition. However, in position of patient who is undergone treatment, it is unpleasant, uncomfortable and painful, which leads to the decline of product reliability. Hence, the next procedure is accordingly rejected. On the other hand, our product rarely has those side effects after treatment.

Secret Rose[®]
How to use

It is safe to use in combination with other solutions (botox, MGF, PDRN, HA filler, etc), and it is much more effective to use with lifting thread. Use in areas with severe muscle pain (shoulder-mostly, thighs, calves, etc.) to relieve pain



Secret Rose[®]
Who need this

- Who wants to reduce face fat.
- Who wants to improve skin elasticity or skin shine.
- Who wants to reduce cheek or chin fat.
- Who wants to get V line face by simple way.
- Who wants to improve complex and bumpy face.
- Who is afraid of side effects of surgery and does not have much time.
- Who wants to maintain a slender jaw line.

"Create slim line from V line to S line"

Secret Rose Face / Body Slimming Injection

It is an injection procedure that directly injects a product having a safe and excellent effect on lipolysis into a desired area. Quick and easy calibration.

Fat dissolution
Fat degradation

Blood circulation
stimulation

Quickly come back
to daily activities

Minimize pain,
bruise,
and swelling